

Waste Management Services Annual Report



2010



ABOUT THIS REPORT

The Region of Durham Waste Management Services Division provides cost effective waste collection, processing, composting, re-use and disposal services, as well as quality waste facilities and programs for recycling, composting and disposal. This report highlights activities, accomplishments and program results for 2010.



CONTENTS

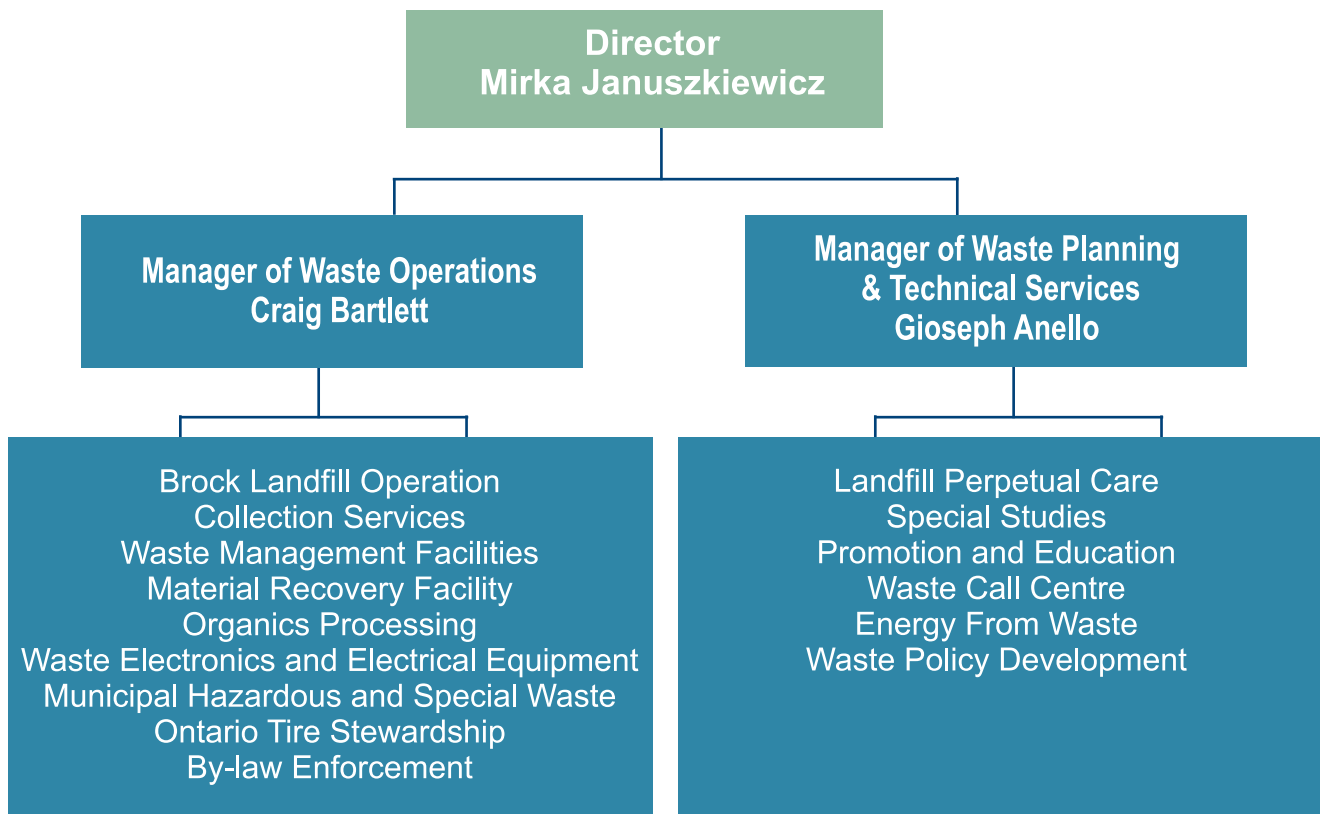
Waste Management Services	4
Overview	5
Region of Durham Waste Facilities	6
2010 Quick Facts	7
Collection	8
Green Bin Composting	8
Recycling	9
Leaf and Yard Waste Composting	10
Garbage	11
Material diversion at Regional Waste Management Facilities	12
Processing and Disposal	13
Diversion from landfill	13
Processing of recyclables	14
Processing of food waste and yard waste	15
Disposal of garbage	16
Major Waste Program Activities	18
Additional blue box distribution	18
Electronic waste collection events	19
Municipal Hazardous and Special Waste Events	19
Compost events	19
Polystyrene Pilot Study	20
Mattress Pilot Study	21
Election Sign Recycling	21
By-law consultation	22
Townships additional Leaf and Yard Waste collection weeks	23
Landfill Perpetual Care Program	24
Annual Landfill Monitoring Program	24
Well water testing around Brock Township Landfill	24
Brock Landfill Pilot leachate collection	24
Oshawa Landfill post-closure and monitoring plan	25
Energy from Waste Project	26
Waste Management Communications	27
Promotion and education activities	27
Media activities	27
Public presentations	28
Printed materials	28
Other community activities	28
Awards	29
Table 1	30

WASTE MANAGEMENT SERVICES

Our Vision:

To provide cost effective waste collection, processing, composting, re-use and disposal services, as well as to offer quality waste facilities and programs for recycling, composting and disposal, and educate residents on the benefits of waste reduction, recycling, and composting.

2010 Organizational chart:



OVERVIEW

The Region is responsible for all waste processing and disposal including Blue Box and Green Bin materials as well as marketing and education services. The Region is responsible for all waste collection services in Pickering, Ajax, Clarington, Brock, Scugog and Uxbridge and provides recycling collection in Oshawa and Whitby. The Region also partners with the City of Oshawa and the Town of Whitby to ensure uniform collection programs Region-wide.

In 2010, new diversion initiatives in support of the 70 per cent diversion target included additional blue box container availability and distribution; additional special waste events for hazardous and electronic waste; and pilot studies to assess the potential for the collection and recycling of polystyrene, mattresses and election signs.

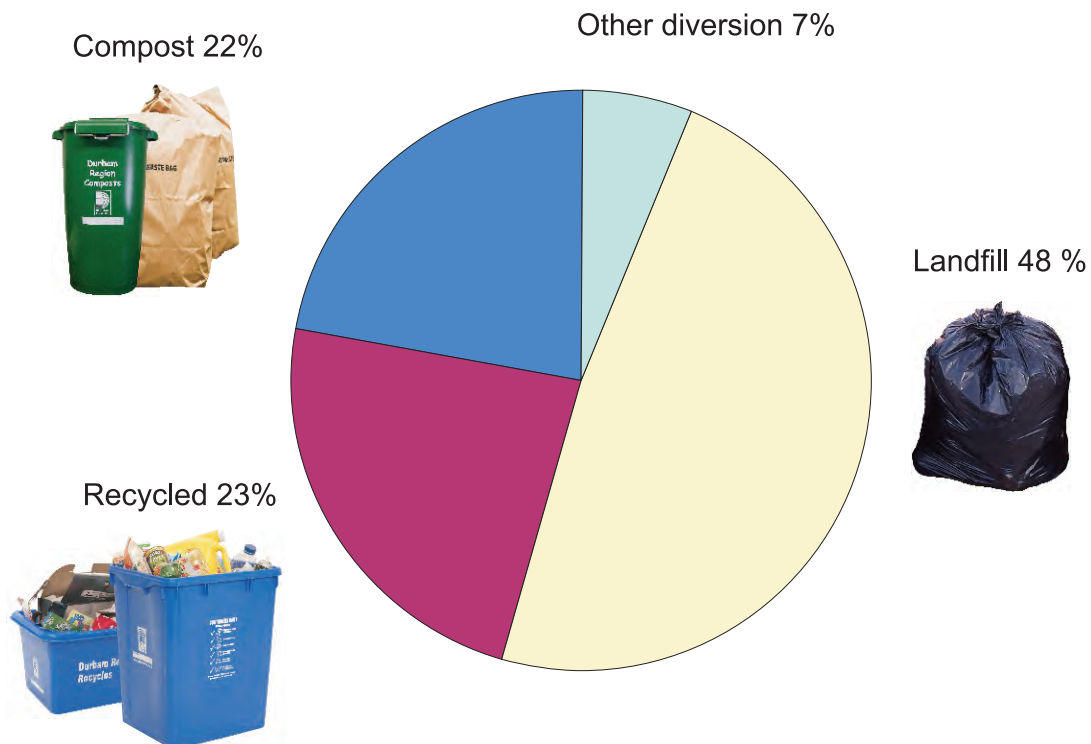
The Region manages:

- one active rural landfill site
- six inactive landfill sites
- three waste management facilities
- one material recovery facility
- four hazardous waste collection depots
- waste electronics and electrical collection events
- municipal hazardous and special waste collection events
- compost giveaway events

The Region maintained its waste diversion rate of 52 per cent in 2010. The waste stream included 226,262 tonnes as follows:

- waste diversion programs 118,262
- residual waste to landfill 108,000

2010 Waste Stream



Region of Durham Waste Management Facilities



Regional Waste Management Facilities

- 1** Material Recovery Facility
4590 Garrard Road, Whitby
- 2** Regional Waste Management Facility
1640 Ritson Road, Oshawa
- 3** Regional Waste Management Facility
1623 Reach Street, Port Perry
- 4** Regional Waste Management Facility
Brock Landfill
Sideroad 17, Brock
- 5** Regional Household Hazardous Waste Facility
1220 Squires Beach Road, Pickering

LEGEND

- REGIONAL HIGHWAYS
- PROVINCIAL HIGHWAYS
- REGIONAL ROADS
- MUNICIPAL BOUNDARIES
- FREEWAY INTERCHANGES

SCALE IN KILOMETRES
0 1 2 3 4 5 6 7 8 9



DURHAM REGION 2010 QUICK FACTS

- Population: 621,500
- Number of households: 211,570
- Number of single family households: 187,598
- Number of multi-family households: 22,347
- Amount of material collected through curbside and apartment recycling programs: 50,908 tonnes
- Revenue earned from the sale of Blue Box recyclables: \$6.3 million
- Total amount of organic material collected through Green Bin composting program: 27,593 tonnes
- Total amount of residential waste (garbage) collected: 88,839 tonnes
- Number of vehicle visits to Region's waste management facilities: 245,377
- Total amount of waste collected at the Region's waste management facilities: 19,161 tonnes

COLLECTION

Green Bin Composting



The Green Bin program represents 12 per cent of the total waste system managed by the Region.

The Region is responsible for the collection of organic waste in six (6) area municipalities (Pickering, Ajax, Clarington, Brock, Scugog and Uxbridge). The City of Oshawa and Town of Whitby provide collection of organic waste using their own municipal forces.

Green Bin organics are separated from regular garbage and set out along the curb each week in a 47 litre green bin. Residents are required to use 100 per cent compostable bags, paper liner bags, or wrap contents in newspaper. The organic waste material is composted at a fully enclosed compost facility in Pickering.

In 2010, the Region collected 27,593 tonnes of Green Bin organic waste for composting.

Compost is an important soil conditioner, used to improve gardens, stabilize slopes, rehabilitate soccer fields and baseball diamonds.

Summary

Green Bin Source	Tonnes
Curbside Green Bin	27,593
Total	27,593

Recycling



The Blue Box program represents 23 per cent of the total waste system managed by the Region.

More than 187,000 households in Durham Region participated in the Region's curbside Blue Box recycling program. This includes single family homes, apartment buildings with less than six units, or small businesses receiving municipal garbage collection.

The Region operates a two-stream recycling system and is responsible for the collection, processing, marketing and sale of all Blue Box recyclable materials from all area municipalities and Regional waste management facilities. This program includes:

- the collection of recyclables from 187,598 residential households
- the collection of recyclables from 22,347 apartment building units

Curbside Blue Box Recycling

In 2010, the Region distributed one 22 gallon Blue Box free of charge to every single family household to help increase residents' ability to recycle and more effectively participate in Durham's two-stream recycling program.

The total amount of recyclables collected through the curbside Blue Box program in 2010 was 48,772 tonnes.

Multi-family Recycling for Apartments and Townhouse

More than 22,000 residents are serviced by the Region of Durham's weekly Apartment Building and Townhouse Complex Blue Box Recycling program. To be eligible for this service, buildings and townhouses must receive municipal garbage collection services.

In 2010, the Region collected 2,136 tonnes of material from the apartment and townhouse recycling program.

Recycling at Regional Waste Management Facilities

An additional 702 tonnes of recyclable material was collected through Regional waste management facilities.

Summary

Recycling Source	Tonnes
Curbside recycling	48,772
Apartment recycling	2,136
Waste management facilities	702
Total	51,609

Leaf and Yard Waste Composting



Leaf and yard waste composting represented 10 per cent of the total waste stream for 2010.

Curbside Leaf and Yard Waste Collection

The Region is responsible for the collection of leaf and yard waste in six (6) area municipalities (Pickering, Ajax, Clarington, Brock, Scugog and Uxbridge). The City of Oshawa and Town of Whitby provide collection of leaf and yard waste using their own municipal forces. In 2010, 21,427 tonnes were collected from curbside programs.

Brush, leaf and yard wastes are collected in kraft paper yard waste bags, rigid reuseable containers or tied and bundled for either outdoor windrow composting or use in the green bin organics composting process. Christmas trees are collected separately during specified weeks in January in each municipality.

Yard waste is not collected in plastic bags as the bags are not compostable and create unwanted odour and litter.

Leaf and yard waste are not accepted as garbage.

Leaf and Yard Waste at Regional Waste Management Facilities

In 2010, 1,647 tonnes were received at the Region's waste management facilities.

Summary

Yard Waste Source	Tonnes
Curbside Yard Waste	21,427
Waste management facilities	1,647
Total	23,074

Garbage



Garbage represented 48 per cent of the total waste stream for 2010.

The Region is responsible for the collection of garbage in six (6) area municipalities (Pickering, Ajax, Clarington, Brock, Scugog and Uxbridge). The City of Oshawa and Town of Whitby provide collection of garbage using their own municipal forces.

Garbage is collected bi-weekly (every two weeks) with a four bag limit per collection per household. All waste materials must be set out at the curb before 7 a.m. on the collection day.

Extra bags can be placed at the curb provided each one is affixed with a Region-approved bag tag. There is a 20 kg weight limit per bag. Extra garbage bag tags are available for \$1.50 each except in the City of Oshawa, bag tags are \$1.00.

Curbside Garbage Collected

All single family homes receive curbside collection of garbage. The total amount of curbside garbage collected in 2010 was 73,198 tonnes.

Garbage Collection from Apartments and Townhouses

In 2010, 13,808 tonnes of garbage were collected from apartment and townhouse complexes.

Bulky Goods Collection

- 1,834 tonnes of bulky goods were collected from curbside properties.
- 19,161 tonnes of bulky goods (includes garbage) were collected from the Region's waste management facilities.

Summary

Garbage Source	Tonnes
Curbside garbage	73,198
Apartment garbage	13,808
Bulky goods	1,834
Waste management facilities	19,161
Total	108,000

Material Diversion at Regional Waste Management Facilities



Summary

Waste Management Facility	Tonnes of Reuse Materials Collected	Tonnes of HHW Materials Collected
Brock	423.5	42.3
Scugog	1,181.5	237.0
Oshawa	3,111.5	708.5
Pickering (HHW only)		197.2
Total	4716.5	1185.0

The Region operates three Waste management facilities located in Oshawa, Port Perry and Brock. Loads containing only household hazardous waste, electronic waste, tires and agricultural bale wrap are accepted at no charge. Fees apply to other waste. The Waste management facilities are open Tuesday to Saturday 8 a.m. to 4 p.m.

In total, 5901.5 tonnes were diverted from landfill disposal through various diversion programs at these facilities.

In 2010, a total of 245,377 vehicles used the Region's waste management facilities:

- 172,896 in Oshawa
- 48,814 in Port Perry
- 22,619 in Brock

1,048 vehicles used the privately owned site where the Region offers a household hazardous waste depot in Pickering.

On average, 83 vehicles enter the Region's waste management facility in Oshawa hourly. This site is open 40 hours a week to provide waste services to residents.

PROCESSING AND DISPOSAL



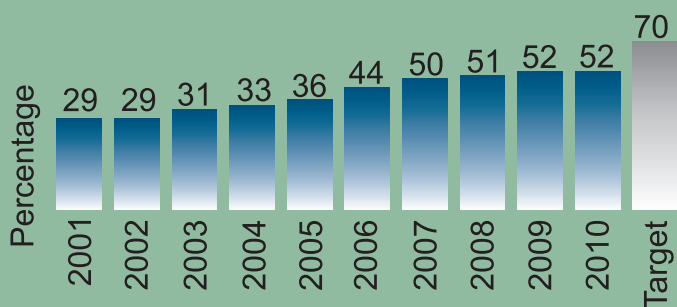
The Region of Durham is responsible for:

- Processing and sale of Blue Box recyclables
- Composting of food waste, as well as leaf and yard waste
- Disposal of residential garbage

Diversion from Landfill

In 2010, approximately 52 per cent of waste collected from Durham Region residents was diverted from landfill through recycling and composting.

Solid Waste Diversion Rates



Processing of Recyclables



Material Recovery Facility

The 68,000 square foot Material Recovery Facility (MRF), which officially opened in December 2007, is owned by The Regional Municipality of Durham and privately operated. Located in the Town of Whitby, the MRF can process up to 120,000 tonnes of recyclables each year.

Contractor Strike at the Material Recovery Facility

The Regional Municipality of Durham is in the third year of a five year contract with Metro Municipal Recycling Services Inc. (MMRSI) for the operation of the Region's MRF where Blue Box materials are sorted and prepared for sale to end markets.

On March 6, 2010, MMRSI, the MRF operator, was forced to suspend all processing operations due to its contracted staff commencing a legal strike.

During the approximate four week strike at the Region's recycling facility, all Blue Box materials were processed and marketed within the Region. No Blue Box materials

were sent to landfill and revenues, although less than normal, were still generated for all materials during the strike.

Recycling Commodities Breakdown for 2010 (materials shipped to market)

Commodity	Tonnes Marketed
Newspaper	23,539.61
Mixed paper	3,511.47
Cardboard	5,100.55
Aluminum	635.65
Steel	1,619.93
PETE	1,772.22
HDPE	803.42
Tubs and lids	352.49
Tetra pak and gable	331.01
Glass	4,143.07
Fibres*	2,498.15
Containers*	854.32
Total	45,161.89

*Marketed material during MRF strike.

Recycling Revenues

The total revenue earned by the Region from the sale of Blue Box recyclables was more than \$6.3 million.

Revenue from the sale of recyclables fluctuates depending on market conditions.

The Region also received \$2.3 million in subsidy from Waste Diversion Ontario.

Marketing of Recyclable Materials

Approximately 98 per cent of the material collected for recycling in Durham Region is marketed. The Region's materials are sold to brokers, mills and manufacturers locally and across North America.

Materials collected and marketed are re-manufactured into a wide variety of products, preserving valuable natural resources.

End Products made from some of Durham Region's Recyclables

Commodity	Typical End Products
Newspaper	Newsprint Insulation Phone Books
Mixed Paper	Roofing Felt Asphalt shingles
Plastic Containers	Plastic lumber
Metal Cans	Concrete reinforcing bar Other steel products
Cardboard	Cardboard
Glass	Construction aggregate



Processing of food waste and yard waste



Miller Waste Compost Facility located in Pickering.

In 2010, 20,549.2 tonnes of green bin organics and 6,398.8 tonnes of leaf and yard waste was received for composting at the Miller Waste Compost Facility in Pickering. The Region also processed another 16,675.7 tonnes of leaf and yard waste at the Miller Waste Courtice location and 7,043.8 tonnes of green bin organics were processed with Alltreat Farms.

Finished compost is marketed to farmers, landscapers and soil remediation firms. The Region also receives 500 tonnes per year for compost giveaway events.

Disposal of Garbage

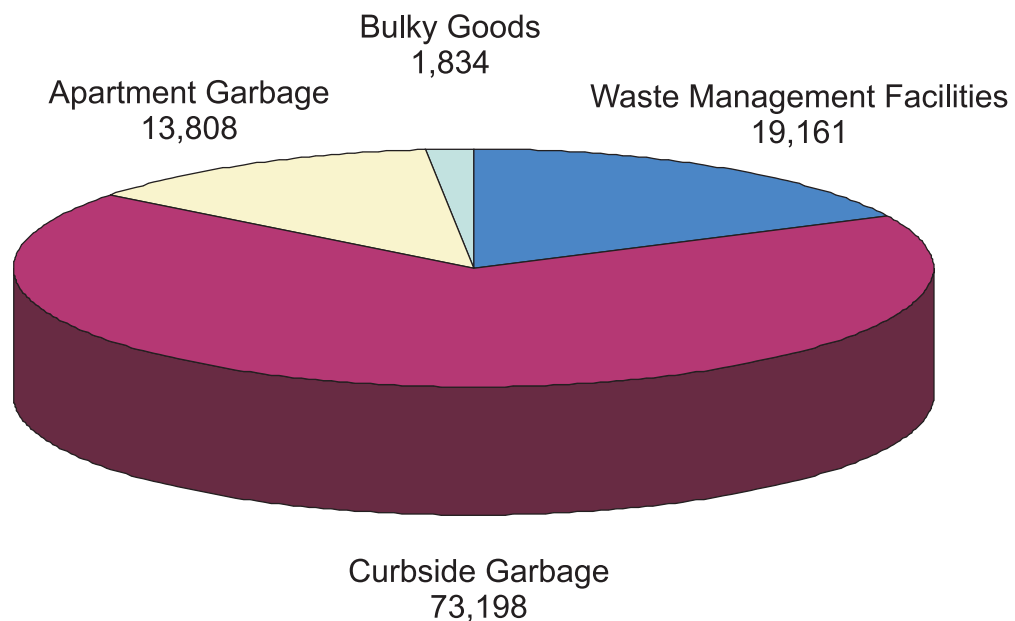


A total of 108,000 tonnes of garbage was landfilled in 2010.

This waste was received at three (3) private waste transfer stations and then hauled to the Pinetree Landfill Site in Michigan.

Curbside garbage from Brock Township was delivered directly to the Region's rural landfill site in Brock Township.

Tonnes of Residential Waste Disposed in 2010



MAJOR WASTE PROGRAM ACTIVITIES

Additional Blue Box Distribution

In 2010, Durham Region provided every household receiving Regional curbside collection services with one additional complimentary 22 gallon Blue Box to help capture the increasing volumes of recyclable materials. The Big Blue Box was designed for container recyclables only, as indicated on the sides of each blue box along with graphics instructions.

Forty-seven percent of the cost of this project was funded by Waste Diversion Ontario's (WDO) Continuous Improvement Fund.

The primary distribution started on September 27, 2010 in the City of Pickering and the Townships of Brock and Uxbridge and then proceeded eastward across the Region. Distribution concluded on October 29, 2010, with 183,174 households receiving an additional blue box.

The Region delivered an extensive advertising campaign to promote and educate residents about the use of the new complimentary Big Blue Box and the Region's two stream recycling program. The promotional materials included advertisements in newspapers, movie theatres, television, radio, bill boards, Go Transit bus/train shelters and recycling collection vehicle decal wraps.

A preliminary analysis indicates that the issuance of the 22 gallon blue box has reduced the use by residents of non-conforming recycling containers. The increased curbside capacity for container recyclables will provide additional opportunity for Durham Region to add new materials to its Blue Box recycling program.



Billboard advertising the new blue box.

Electronic Waste Collection Events

In 2010, the Region organized seven special electronic (e-waste) Saturday collection events, one each in Ajax, Pickering, Whitby, Oshawa, Clarington, Scugog and Brock. These events are designed to give residents an opportunity to deliver unwanted or unusable electronic materials or products to a designated location within the municipality for free collection and recycling. These local events were quite successful; drawing in 2,103 cars, collecting 81 tonnes of e-waste.

Residents also have the opportunity to bring e-waste to any Regional waste management facility. As of November 1, 2010 dedicated loads of e-waste are accepted free of charge.

Municipal Hazardous and Special Waste Events

In 2010, the Region organized five Municipal Hazardous and Special Waste (MHSW) collection events, one each in Ajax, Whitby, Clarington, Uxbridge and Brock. Like the e-waste events, residents can bring MHSW materials or products to a designated location within the municipality for collection and disposal. The events were successful in drawing 1,186 cars, collecting 50 tonnes of MHSW material. Loads containing only MHSW can also be brought to a Regional waste management facility during operating hours at no charge.

Compost Events

In 2010, the Region organized eight Compost Giveaway events in combination with blue box and home composter sales. One event was held in each of the eight municipalities. The amount of compost distributed in each municipality varied from 48 to 80 tonnes of compost. The leftover compost material was made available to the municipalities for use on their gardens and public parks. The Region saw 4,436 cars at the 2010 compost events.



Events held in the spring and fall in each municipality.

Expanded Polystyrene Pilot Study

The expanded polystyrene (EPS) pilot study was carried out in 2010 to assess the potential for expanding our recycling program to reach Durham's 70 per cent waste diversion goal. This six month program was conducted at the Oshawa Waste Management Facility (WMF) on Ritson Road North in Oshawa

The two phase pilot program was launched on June 1, 2010 with a planned end date of November 27, 2010. The first phase of the program ran from June 1, 2010 to August 28, 2010. Residents were encouraged to bring polystyrene to the Oshawa WMF with the incentive that the material will be recycled. Regular disposal fees applied. The second phase of the program ran from August 31, 2010 to November 27, 2010. This phase allowed for the temporary suspension of the disposal fee to determine if cost played a factor in the amount of polystyrene material that residents would bring to the WMF.

A total of 1.5 tonnes of polystyrene was collected at the Oshawa WMF during the first phase of the pilot. The second phase of the program resulted in the collection of 2.1 tonnes of material. A total of 3.6 tonnes of polystyrene was collected from the Oshawa WMF throughout the pilot.

Staff has recommended that the Region enter into a five year agreement with Grace Canada to continue recycling EPS at the Oshawa WMF and be authorized to explore the feasibility of expanding the program to include the Scugog and Brock WMFs.



A total of 3.6 tonnes of polystyrene was collected at the Oshawa Waste Management Facility throughout the pilot.

Mattress Recycling Pilot Study

In 2010, a six month mattress recycling pilot study was conducted in two phases. The first phase occurred from June 1 until August 31, and regular disposal fees applied. The second phase ran from August 31 until November 27, and offered residents a no disposal fee incentive to recycle mattresses and box springs.

The data collected indicates that the option to recycle mattresses with or without costs, did not affect the overall tonnage received. The cost to recycle mattresses using a depot collection method is approximately eight times higher per tonne than disposal costs for the same items collected as bulky materials at the curb. Given this information, continuation of a depot based mattress recycling program is unwarranted at this time.



A shipment of mattresses ready to go for recycling.

Election Sign Recycling Program

At its meeting of October 6, 2010, Council directed staff to enter into a contract with Target Recycling Services Inc. for the acceptance and recycling of election signs from the 2010 municipal election at no cost to the Region.

The Election Sign Recycling Program was launched on October 28, 2010 and ran until November 28, 2010. It provided Durham Region candidates in the 2010 municipal elections the opportunity to recycle their signs, (including those made from plastic film on wire, paperboard on wood, or corrugated plastic) free of charge at any of the Region's three Waste Management Facilities located in the Townships of Brock and Scugog, or in the City of Oshawa.

Materials were delivered to Target Recycling, located in Ajax, during the week of December 13, 2010 for processing.

Between October 28 and November 30, 6.28 tonnes of election signs were collected for recycling.

Breakdown of Collected Material	
Material Type	Tonnage Recycled
Plastic signs	4.35
Wooden stakes	1.03
Metal armatures	0.90
Total	6.28



Collection of signs at the Waste Management Facility in Oshawa.

By-law Consultation

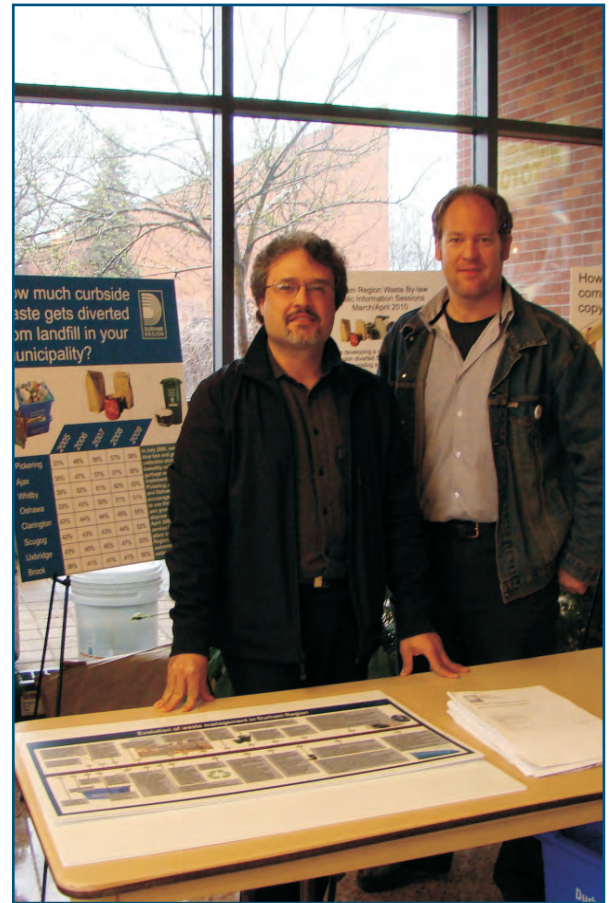
The Region has been operating without a comprehensive waste management by-law since consolidating waste management services in 2005.

At its meeting of June 24, 2009, Council directed staff to implement a consultation process with the Area Municipalities, the residents of the Regional Municipality of Durham, and other stakeholders to receive input on the development of a Durham Region Waste Management By-law and to report back in the fall of 2010 with a proposed Waste Management By-law based on the input of the consultation process.

The consultation period ran from March 15 to July 5, 2010 and included discussions on the draft Waste Management By-law with staff and Councils of the area municipalities, residents of Durham Region, and other stakeholders to receive input on the development of a Durham Region Waste Management By-law.

Upon enactment, the By-law will govern the provision of municipal waste management services in the Region of Durham by;

- defining the Region's waste management programs
- defining acceptable waste in the Region's waste management programs
- setting service level standards for the collection of waste
- setting service level standards for the operation of the Region's waste management facilities
- setting garbage bag limits for curbside collection of waste
- outlining the roles and responsibilities of the Region
- outlining the roles and responsibilities of users for eligibility to receive Regional waste management services
- outlining special service provisions for families with small children and families with special needs
- outlining roles and responsibilities of the Region's contractors for the provision of waste management services
- outlining the Region's waste management fees



Staff at one the public information sessions.

Fourteen Additional Leaf and Yard Waste Collection Weeks for Townships

The Regional Municipality of Durham increased the number of collection weeks for seasonal leaf and yard waste in the townships of Brock, Scugog and Uxbridge from 10 to 24 this year, as part of the Region's transition plan to provide a standardized service.

The fourteen new collection weeks occur from April to the first week of December, and have provided residents with increased accessibility and convenience of participation in the curbside diversion program.

In 2011, Durham Region will continue to deploy promotion and education campaigns to increase program awareness and participation in these communities.



Landfill Perpetual Care Program

Annual Landfill Monitoring Program

The annual landfill gas, surface water and groundwater monitoring programs continued at all Regional landfill sites. Surface water monitoring is conducted at all landfill sites, however gas monitoring is only conducted at the landfill site in Oshawa.

Well Water Testing around the Brock Township Landfill

The Region continues to monitor the quality of residential well water from residents living near the Brock Township Landfill Site. Samples were collected from eight wells and lab results continue to indicate there are no impacts from the nearby landfill site.

Brock Landfill Pilot Leachate Collection System

A pilot study report summarizing the activities related to the construction and temporary operation of a pilot-scale leachate collection system was submitted to the Ministry of Environment (MOE) in March of 2010. Based on the pilot trials, the system was effective in eliminating leachate from seeping into the adjacent wetland area, and the on-site retention pond effectively handled the volumes of leachate pumped from the collection trenches.

As recommended in the report, a third leachate collection trench will be constructed in 2011 along the north side of the landfill to eliminate leachate seeps in that area.



Construction of leachate collection trenches and retention pond

Oshawa Landfill Post-Closure and Monitoring Plan

In 2010 the Region undertook the construction of a passive landfill gas venting system at the southeast property limit of the Oshawa Landfill site to replace the existing poorly operating active gas collection system. A new passive landfill gas venting system was also installed north of Father Joseph Venini elementary school. Work commenced in early January and was completed in the spring. Ongoing monitoring of the new system indicates that the system is working well and adequately protecting neighbouring properties from potential off-site migration of landfill gas.

A tender was released in November 2010 for the construction of an additional passive landfill gas venting system at the southwest corner of the Oshawa Landfill site. Construction began in mid-February 2011. The completion of this work will mean that all properties adjacent to the southern limits of the landfill will be protected by a combination of passive landfill gas venting systems and buffer lands.



Work on the gas venting system.

Energy From Waste Project

On November 19th, 2010, Durham and York Regions received approval from the Ministry of Environment (MOE) under the Environmental Assessment Act to proceed with the design, construction and operation of an Energy-from-Waste facility to be located in Courtice, in the Municipality of Clarington. The facility will process 140,000 tonnes of residual waste from Durham and York Regions. Recyclable metals, and energy in the form of electricity and steam will be recovered. Upon obtaining the Minister's approval, Durham and York executed the Project Agreement with Covanta Energy Ltd. on November 25, 2010. In early 2011, the Certificates of Approval were submitted to the MOE. Construction is expected to commence later in 2011.



Artist rendering of the Durham York Energy Centre.

Waste Communications

Promotion and Education Activities

The Region continued to actively promote the benefits of waste reduction through the following programs and activities:

Media Activities

- Radio advertisements airing on three local radio stations throughout the year;
- Live radio broadcasting from Regional events when possible.
- Newspaper advertisements included: 34 colour ads, and three four-page, colour flyer sleeves in Metroland Newspapers across Durham; and 30 colour ads among various local independent newspapers;
- Six scheduled television interviews aired on CHEX TV cable channel 12 and nine sessions on Rogers TV cable channel 10 discussing operational issues;
- Television commercials airing on CHEX TV and Rogers TV.

Can berry containers be recycled in the blue box?



Yes

No

Only the following plastics can be recycled in your blue box: plastic bottles with a twist off top up to 10 litres in size and food tubs up to two litres in size.



Region of Durham Works Department
905-579-5264 or 1-800-667-5671
www.durhamregionwaste.ca

Can takeout containers be recycled in the blue box?



Yes

No

Only the following plastics can be recycled in your blue box: plastic bottles with a twist off top up to 10 litres in size and food tubs up to two litres in size.



Region of Durham Works Department
905-579-5264 or 1-800-667-5671
www.durhamregionwaste.ca

Public Presentations

- Participated in six events at libraries, home shows and local fairs
- Presented four information sessions to municipal councils, international conferences and school boards
- Delivered waste education presentations to approximately 4,000 students

Printed Materials

- Printed information was distributed through water billing inserts, municipal libraries, Welcome Wagon for new residents, public kiosks in malls, and at public events
- “*Durham Works*” spring and fall newsletters contained numerous waste articles
- Leaderboard advertisements were placed on “*durhamregion.com*” and *KX96.com*
- Information postings on Regional, municipal and project websites
- Distributed approximately 105,000 waste management calendars to residents through Canada Post and additional mail outs by Call Centre and local distribution points

Other Community Activities

- “*National Public Works Week*”, sponsor with live radio broadcast, tours of recycling facility, children's face painting and information displays
- Held two lunch and learn sessions at the Regional Headquarters building during Waste Reduction Week
- Exchanged 1,915 Blue Boxes, 606 kitchen food waste containers and 1,718 curbside Green Bins for new boxes, containers or bins due to damage
- Sold 1,854 new Blue Boxes, 204 backyard composters, 615 curbside Green Bins and 485 kitchen food waste containers
- Responded to more than 47,798 telephone calls regarding waste programs

Awards



The Region's Waste Management division once again received international recognition for its waste management practices, when it was announced as a double award winner by the Solid Waste Association of North America (SWANA). The awards included:

- the 2010 Marketing Gold Excellence Award presented for the Green Bin Education and Compliance program,
- the 2010 Special Waste Management Gold Excellence Award for the Region's Agricultural Bale Wrap Recycling program.

The Region's Waste Management division was also honoured with the 2010 Recycling Council of Ontario Gold Waste Minimization Award.

Durham also won the 2010 Municipal Waste Association Gold Award for Best Campaign, Silver Award for Best Newsletter and Bronze Award for Best Web Based Tool.



TABLE 1

REGION OF DURHAM
TONNES OF RESIDENTIAL WASTE MANAGED

Descriptions	Curbside Garbage	Apartment Garbage	Bulky/Other Goods	Curbside Recycling	Apartment Recycling	Food Composting	Leaf & Yard Composting	Composter Credits	Grasscycling Credits	Reuse Programs	Total Waste	Waste Diversion
1 Curbside & multi-residential wastes												
Pickering	11,274	1,019	232	7,276	188	4,424	3,245	791	649	2	29,100	57%
Ajax	12,570	1,603	267	8,071	174	5,652	3,154	679	631	1	32,802	56%
Whitby	12,938	2,729	575	10,467	402	6,545	4,750	1,136	950	0	40,492	60%
Oshawa	18,216	8,095	201	11,591	1,372	5,627	5,888	1,624	1,178	0	53,791	51%
Clarington	10,767	19	320	6,765	0	3,305	2,726	613	545	31	25,091	56%
Scugog	2,856	217	64	1,751	0	833	706	312	141	18	6,899	55%
Uxbridge	2,817	125	68	1,674	0	821	684	257	137	22	6,604	54%
Brock	1,760	0	105	1,177	0	386	275	143	55	16	3,917	52%
sub-totals	73,198	13,808	1,834	48,772	2,136	27,593	21,427	5,554	4,285	90	198,696	55%
		88,839			50,908		49,020		9,839			
2 Regional waste disposal sites												
Oshawa	0	0	12,655	433	0	0	1,280	0	0	3,820	18,188	30%
Port Perry	0	0	4,123	194	0	0	368	0	0	1,419	6,103	32%
Pickering	0	0	0	0	0	0	0	0	0	197	197	100%
Brock	0	0	2,382	75	0	0	0	0	0	466	2,923	19%
MRF	0	0	0	0	0	0	0	0	0	23	23	100%
sub-total	0	0	19,161	702	0	0	1,647	0	0	5,925	27,435	30%
3 Special Events												
HHW	0	0	0	0	0	0	0	0	0	50	50	100%
E-Waste	0	0	0	0	0	0	0	0	0	81	81	100%
sub-total	0	0	0	0	0	0	0	0	0	131	131	100%
4 Summary												
municipal residents	73,198	13,808	1,834	48,772	2,136	27,593	21,427	5,554	4,285	90	198,696	55%
Regional waste sites	0	0	19,161	702	0	0	1,647	0	0	5,925	27,435	30%
Special Events	0	0	0	0	0	0	0	0	0	131	131	100%
sub-total	73,198	13,808	20,995	49,474	2,136	27,593	23,074	5,554	4,285	6,145	226,262	
Total Tonnes, with credits		108,000		51,609		50,667		9,839		6,145	226,262	
Total Tonnes, managed		108,000		51,609		50,667		6,145			216,422	
Percentages of Total	32%	6%	10%	22%	1%	12%	10%	2%	2%	3%	100%	
Waste diversion rate	52%											March 8, 2011

